

spenard builders supply ▣

# ALASKA AT HOME

**AFFORDABLE HOME PACKAGES**

Engineered for Arctic Conditions



Standard Package Criteria

<b>Roof Load Trusses*</b>		<b>Wall Loading*</b>		<b>Vapor Barrier</b>	
Live Load	50# per square foot	Wind Loading	125 mph	6 mil Poly	
Dead Load Top Chord	10# per square foot	<b>Insulation Specifications</b>		<i>*Built to local load specifications</i>	
Dead Load Bottom Chord	5# per square foot				
Wind Loading	125 mph				

Exterior Package Materials List

<b>Foundation System</b>		<b>Roof Truss System</b>		<b>ASC Klondike Metal Siding</b>	
AWW 4 x 12 pads		5/8" CDX		36" Coverage	
AWW 6 x 6		5/12 Pitched Trusses, 18" cantilever, 14" heel		Installation: Horizontal or Vertical	
Glulam per plan		14" I-joist truss blocking		Suitable for high wind regions	
Simpson Hangers		2 x 4 hem fir truss lateral bracing		Manufactured ONLY in Anchorage, AK	
<b>Floor System</b>		Ice and water shield		<b>Alpine Vinyl Window System</b>	
		Synthetic Felt		Living room - Casement and picture windows	
		Arctic gable vents		Bedrooms - Casement 36 x 42 window	
		12D galvanized box nails		Kitchen/Entry - Casement 36 x 36 window	
		8D galvanized box nails		Dining room - Casement and picture windows	
		Simpson H1 hold down		<b>Exterior Door System</b>	
		T-50 Arrow staples		Fiberglass pre-hung, 3'0 x 6'8"	
<b>Wall System</b>		<b>ASC Roofing System</b>		Keyed lock	
		Nor-Clad 29 ga.		Deadbolt	
		Nor-Clad painted steel roofing		<b>Miscellaneous</b>	
		Nor-Clad painted eave		Porch decking and handrail - 2 x 6 x 8' UltraDeck	
		Nor-Clad painted universal ridge		Porch balusters - 2 x 4' UltraDeck	
		Nor-Clad painted sidewall		Exterior doors - Exterior latex paint 3" brush	
		Masterflash		Paintable silicone	
		Top closure		1-1/2" galvanized roofing nails	
		Bottom closure		16D galvanized casing nails	
		Neoprene tape		Crating	
		#14 x 1" painted wood screws			
		3/4" painted stitch screws			

Additional Criteria/Notes:

Interior Package Materials List

<b>Insulation &amp; Vapor Barrier</b>		<b>Electrical System con't</b>		<b>Floor Covering System</b>	
Floor - R-38 x 16" unfaced		Receptacles		Luxury Vinyl Plank Flooring	
Ceiling - R-38 x 24" unfaced		Ground fault receptacle		LVP - 20 Mil	
Walls - R-21 x 15" unfaced, with R-11 x 23"		Ceiling boxes		Patented Locking System	
6 mil Vapor Barrier		Red nuts		<b>-OR-</b>	
Poly tape		Yellow nuts		Shaw Carpet	
<b>Plumbing &amp; Heating System</b>		Ground rod		Carpet pad	
		Ground rod clamp		Carpet tack	
		Ground rod wire		DIY carpet seam tape	
		Double switch cover		72" gold carpet bar	
		Single receptacle covers		25# Fixall	
		Single switch covers		3/8" Plywood underlayment	
		20 Amp breakers		Elmers glue	
		30 Amp breakers		<b>Interior Trim System</b>	
		Wire staples		12" x 12' particle board shelving	
		Bath fan with piping		16" x 12' particle board shelving (some plans)	
		Smoke alarms		Closet rod	
		LED Light Fixtures		Rod and shelf brackets	
		50 Amp breaker		Rosettes	
<b>Plasterboard &amp; Paint System</b>		<b>Plasterboard &amp; Paint System</b>		Privacy lockset	
		5/8" x 4' x 8' plasterboard		Passage lockset	
		Liteline plasterboard mud		Bi-fold knobs	
		Plasterboard tape		Spring door stop	
		8' nail on plasterboard OSC		Hinge pin door stop	
		5 gallon PVA primer		Shims	
		5 gallon interior latex semi-gloss paint		Primed colonial casing	
		1 gallon exterior latex paint		Toilet paper holder	
		Paint roller kit		Towel bar	
<b>Electrical System</b>		<b>Interior Door System</b>		Towel ring	
		Bedrooms - Pre-Hung Strand Oak		Shower rod	
		Utility - Pre-Hung Strand Oak		Medicine cabinet	
		Closets - Pre-Hung Strand Oak		MDF 1 x 8 x 16'	
		<b>Cabinet &amp; Countertop System</b>		6D bright finish nail	
		Kitchen - KCD Cabinets		4D bright finish nail	
		Bathroom - KCD Cabinets		<b>Appliance System</b>	
		Laminate countertops		30" vented white range hood	
		<b>Electrical System</b>		30" white electric or gas range	
		(Complete package to weatherhead)		18 cu. ft. white refrigerator	
		125 Amp breaker box		<b>Duplex Additional Materials</b>	
		125 Amp meter base		R-11 x 16 sound insulation	
		100 Amp breaker			
		250' 12/2 romex			
		Single gang box			
		Double gang box			
		Single pole switch			
		3-way switch			
		250' 12/3 wire			
		10/3 wire			

Additional Criteria/Notes:

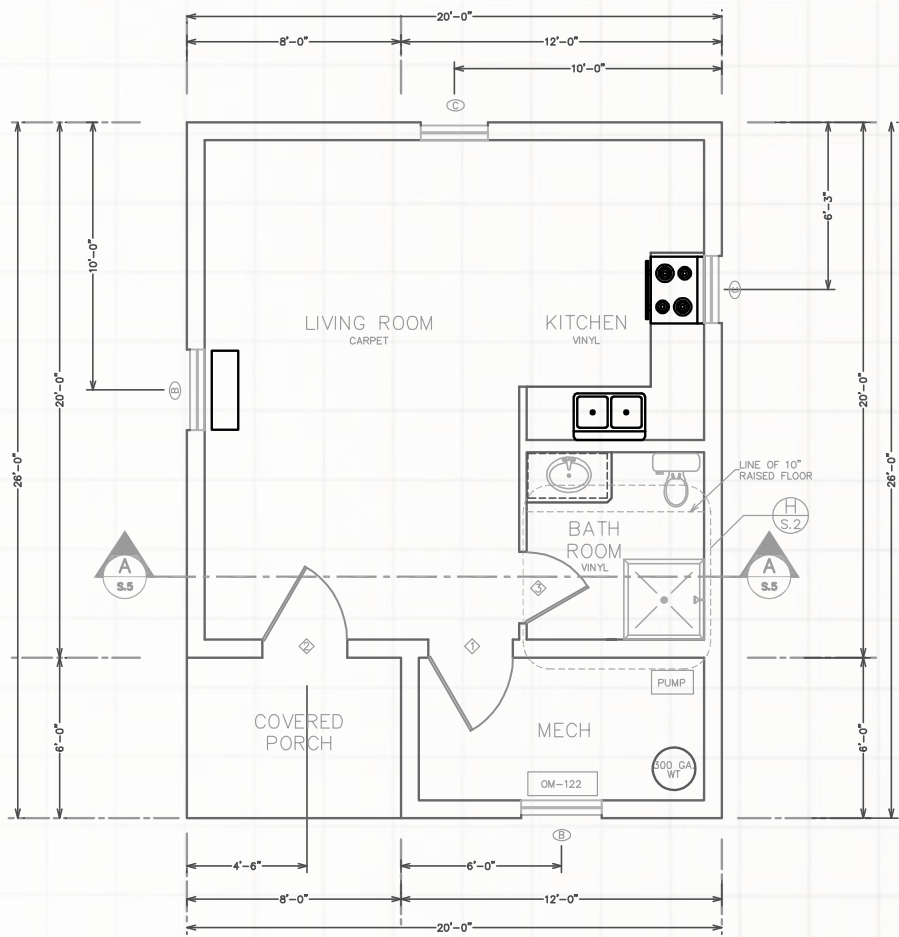


SBS PLAN #472

472 SQ. FT. | 1 BATHROOM | COVERED PORCH



Renderings may differ then final floor plan.



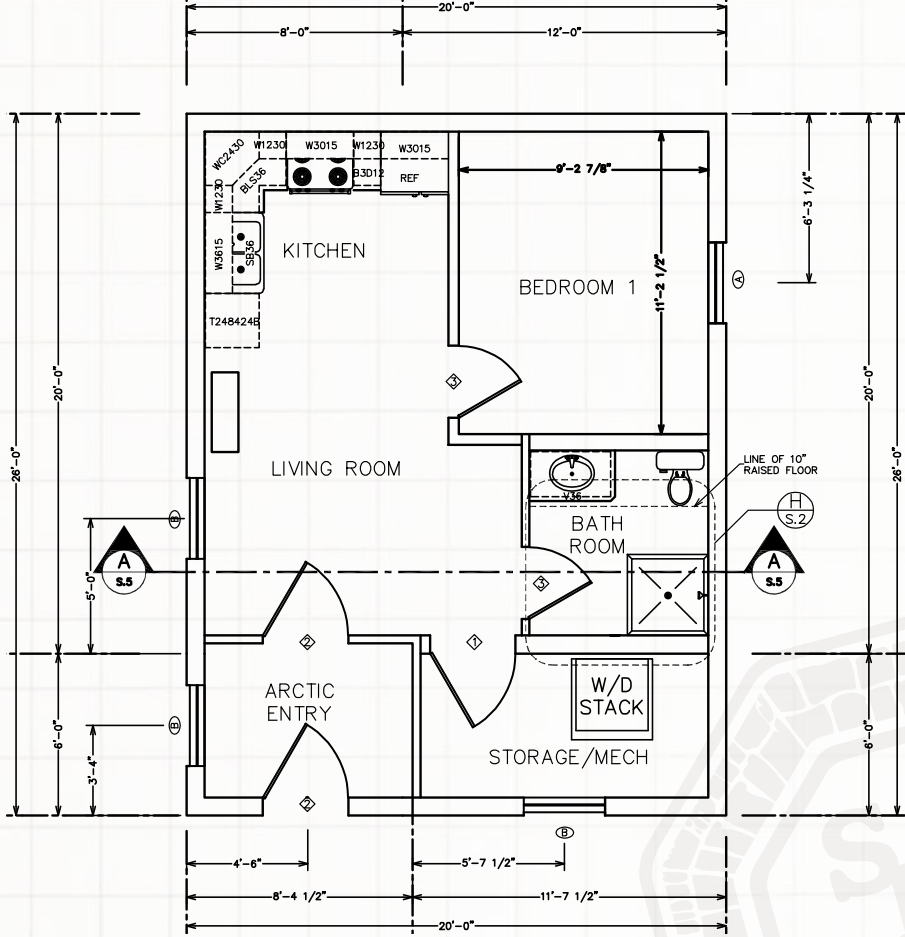
SBS PLAN #520

520 SQ. FT. | 1 BEDROOM | 1 BATHROOM | ARCTIC ENTRY

New floorplan!



Renderings may differ then final floor plan.

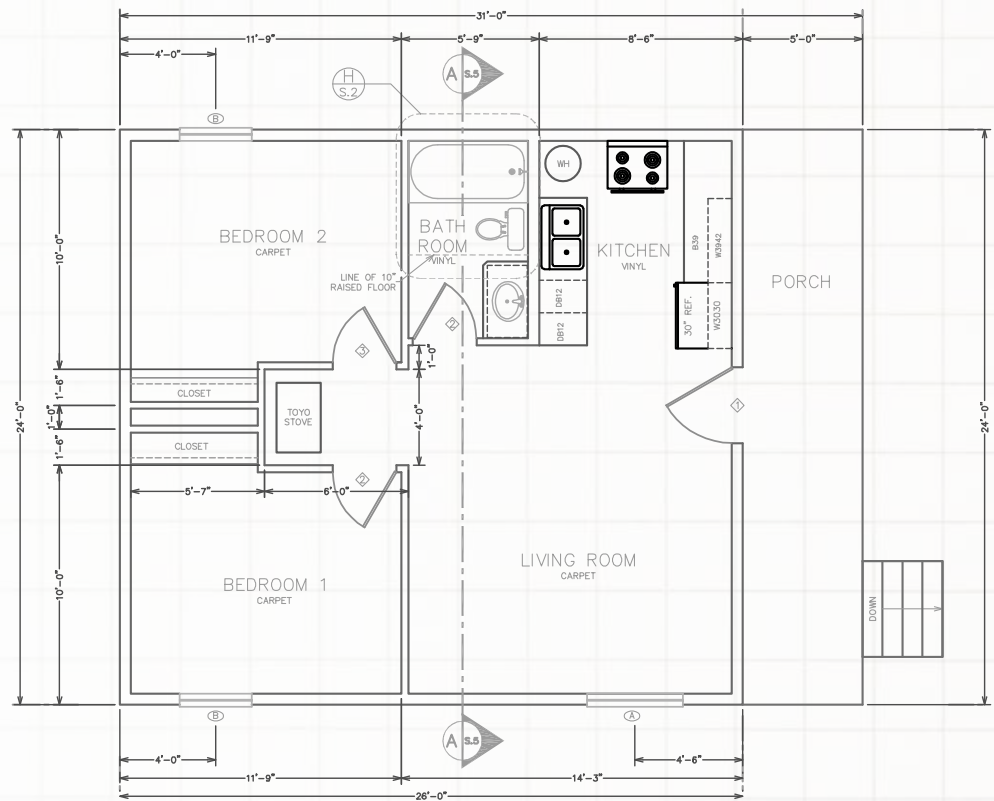


SBS PLAN #624

624 SQ. FT. | 2 BEDROOM | 1 BATHROOM | COVERED PORCH



Renderings may differ then final floor plan.

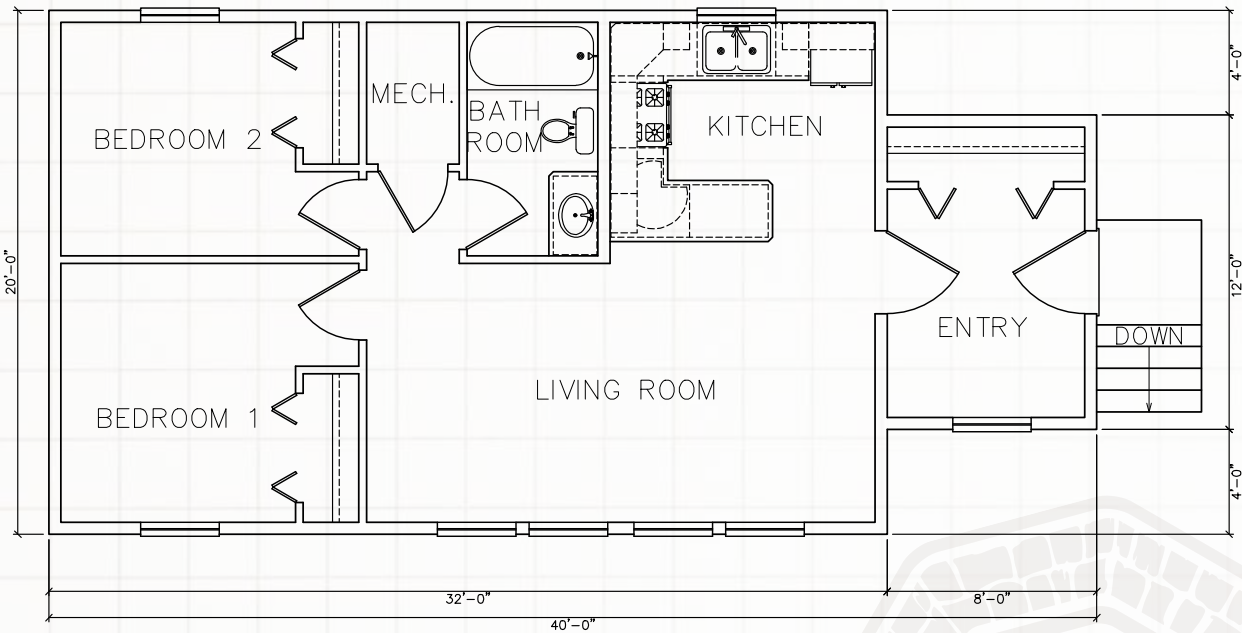


SBS PLAN #736

736 SQ. FT. | 2 BEDROOM | 1 BATHROOM | ARCTIC ENTRY



Renderings may differ then final floor plan.

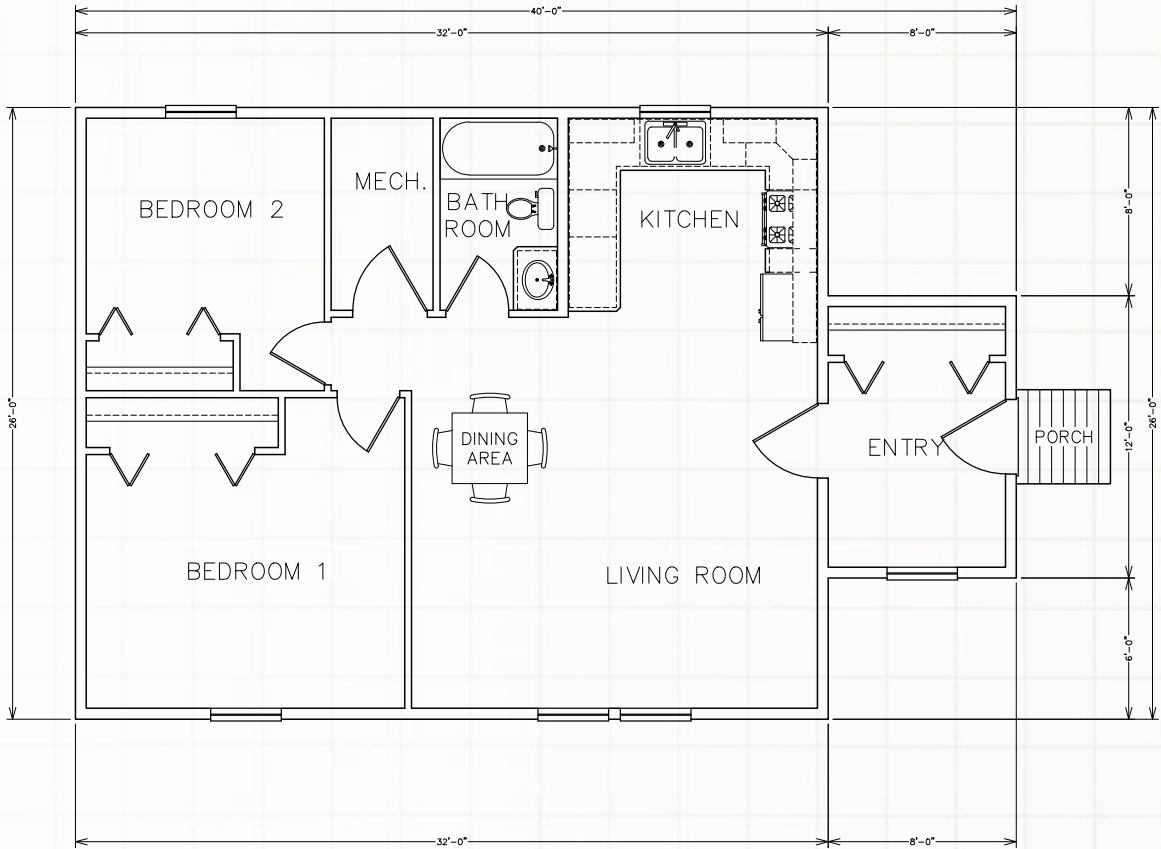


SBS PLAN #928

928 SQ. FT. | 2 BEDROOM | 1 BATHROOM | ARCTIC ENTRY



Renderings may differ then final floor plan.

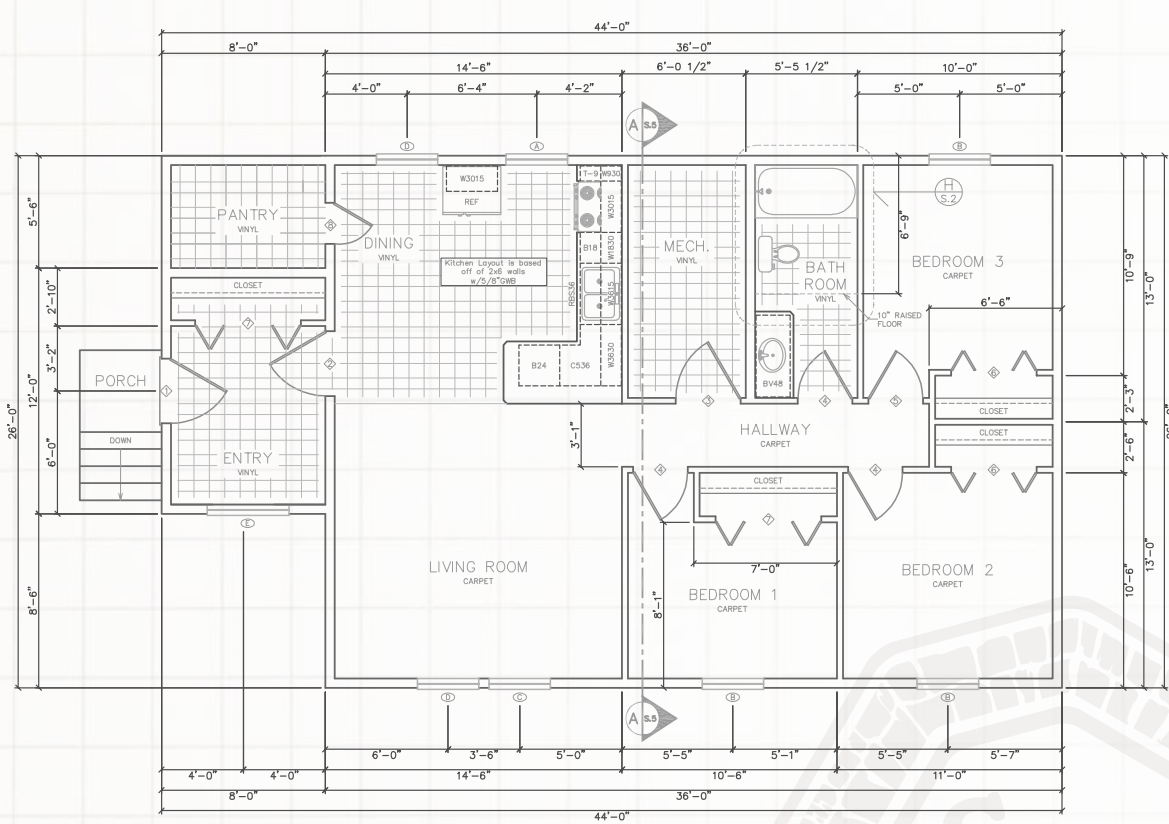


SBS PLAN #1076

1076 SQ. FT. | 3 BEDROOM | 1 BATHROOM | ARCTIC ENTRY



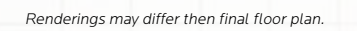
Renderings may differ then final floor plan.



**1208 SQ. FT. | 2 BEDROOM | 1 BATHROOM | ARCTIC ENTRY**



**1232 SQ. FT. | 4 BEDROOM | 1 BATHROOM | ARCTIC ENTRY**

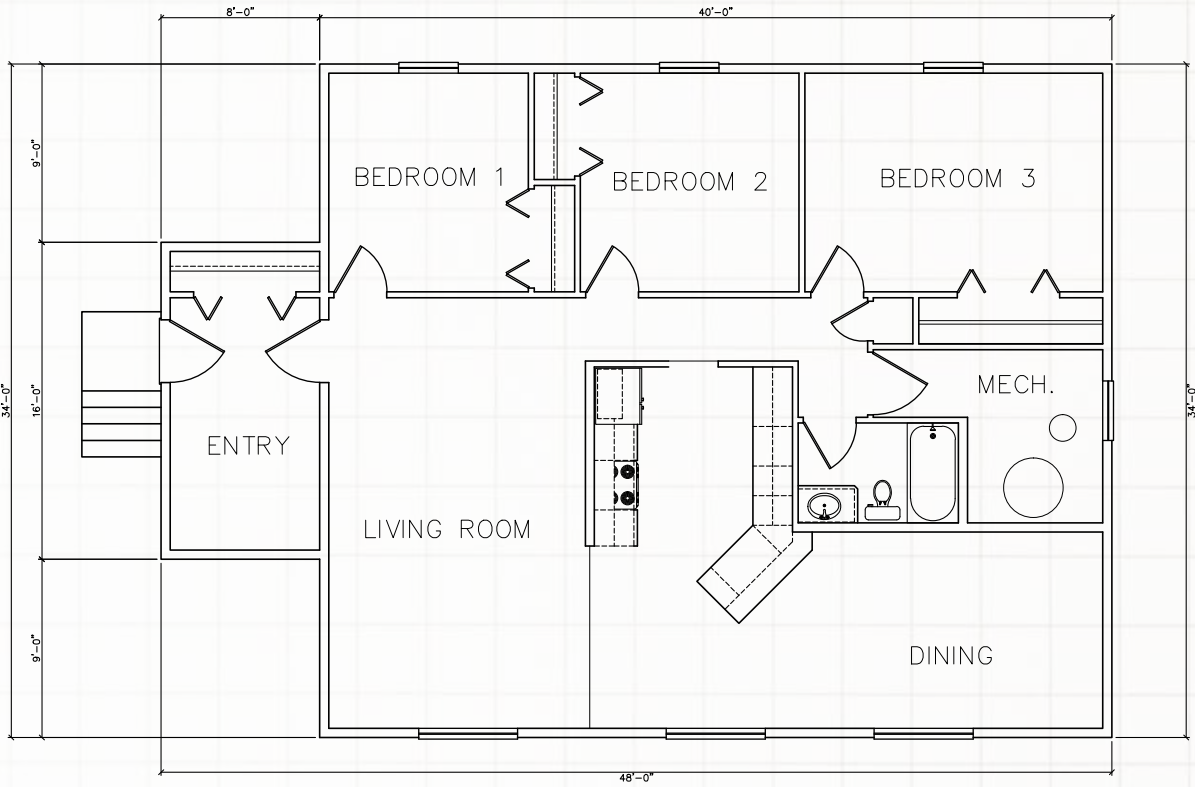


SBS PLAN #1488

1488 SQ. FT. | 3 BEDROOM | 1 BATHROOM | ARCTIC ENTRY



Renderings may differ then final floor plan.



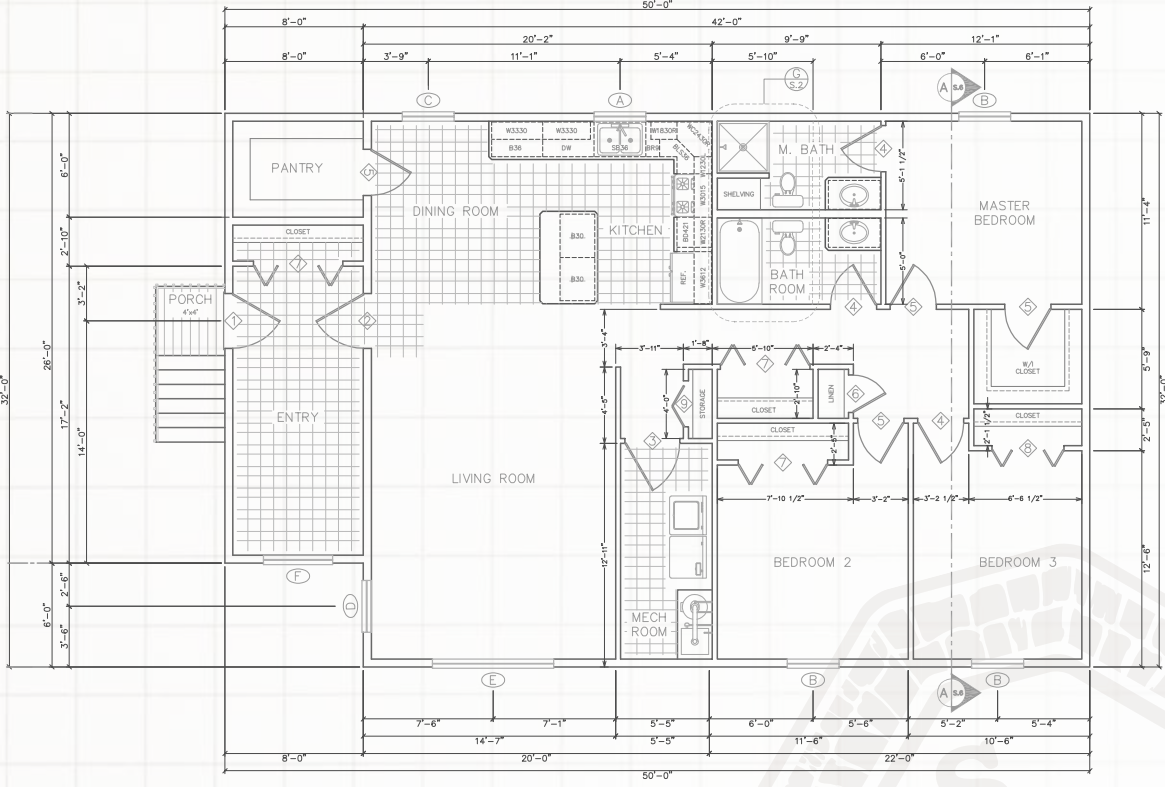
SBS PLAN #1552

1552 SQ. FT. | 3 BEDROOM | 2 BATHROOM | ARCTIC ENTRY

One of our most popular floorplans!



Renderings may differ then final floor plan.

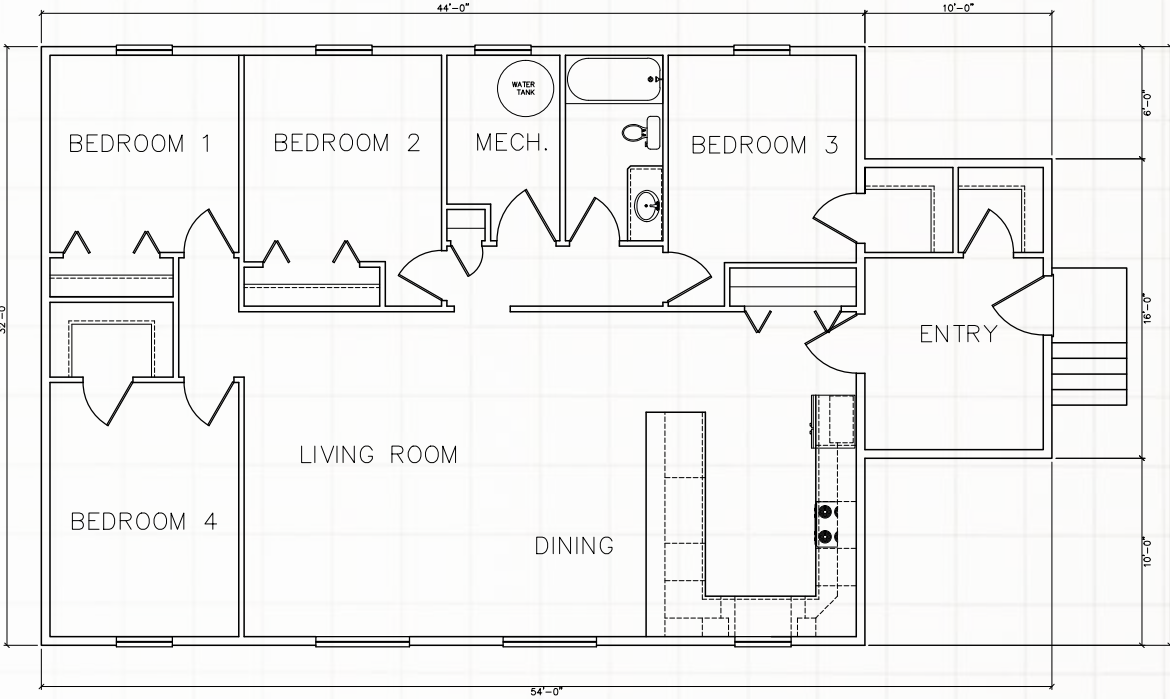


SBS PLAN #1568

1568 SQ. FT. | 4 BEDROOM | 1 BATHROOM | ARCTIC ENTRY



Renderings may differ then final floor plan.

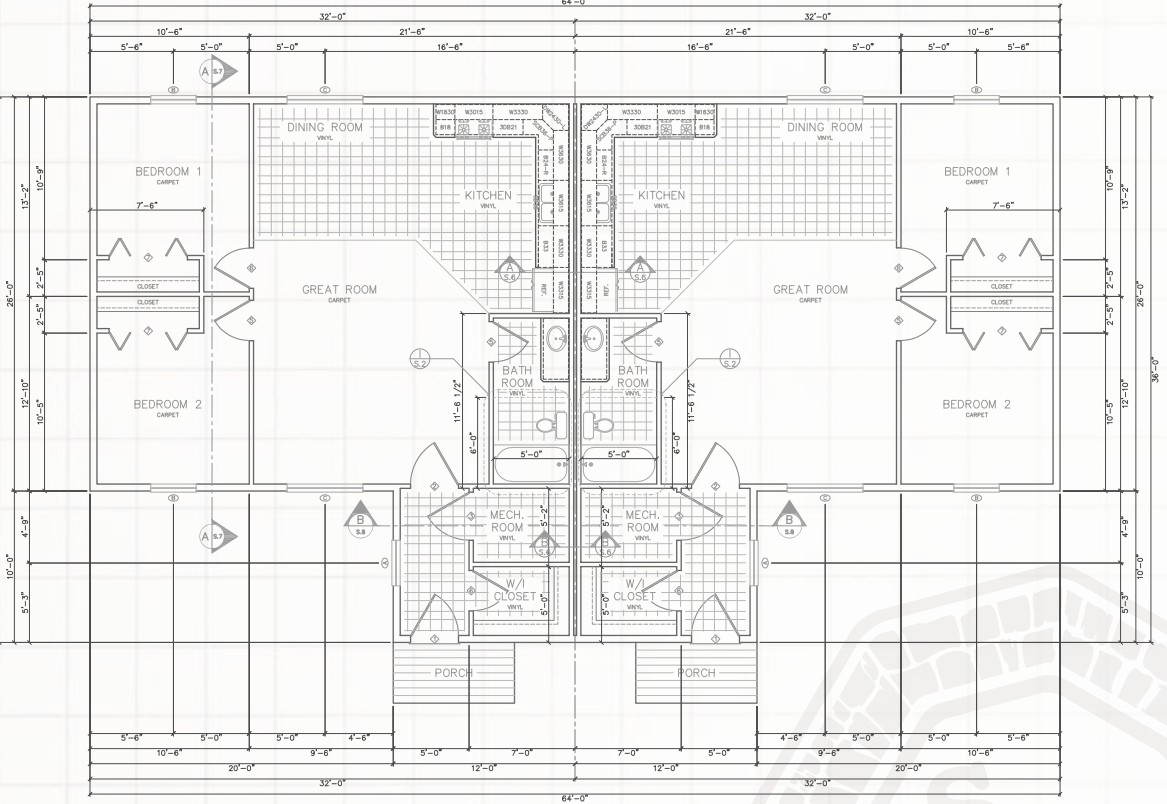


SBS PLAN #1904 DUPLEX

1904 SQ. FT. | 2 BEDROOM | 1 BATHROOM | ARCTIC ENTRY



Renderings may differ then final floor plan.



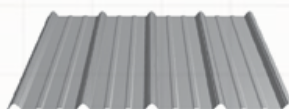
# Home Finishes & Decor Options

## ASC Metal Roofing

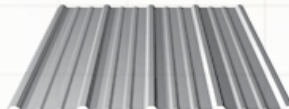
- 29 gauge
- 36" panel coverage (width), trapezoidal rib on 9" centers
- Exposed fastened, low profile panel
- Applies over open framing or solid substrate

Consider the many advantages a metal roof can offer your home.

- ✓ Weather Resistant
- ✓ Non-combustible
- ✓ Maintenance
- ✓ Appeal
- ✓ Strength
- ✓ Applications



Strata Rib



Nor-Clad



## ASC Klondike Metal Siding

Klondike® metal siding is suitable for extreme climates and high wind conditions. This structural exposed fastened metal siding system is an ideal application for residential and commercial, exterior or interior siding, wainscoting, and trailer skirting projects. Klondike® metal siding offer builders flexible design options with panels that can be installed vertically or horizontally as well as provide a variety of colors to choose from. Klondike® metal siding provide a safer alternative to other traditional building materials.



## ASC Metal Roofing and Siding Color Chart



### PREMIUM PRINTS



Premium prints subject to upcharge

\*Please note these colors are batch sensitive (may have color variation) and are directional in nature. Different batches are not to be mixed on projects. We recommend that you request a sample of current stocked material to review actual color before ordering to ensure color accuracy. We are not responsible for color variations.

# Home Finishes & Decor Options



## KCD Cabinets

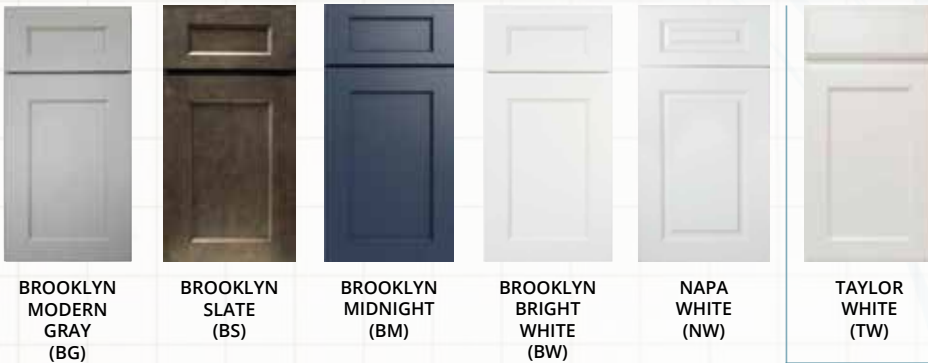
Our Premier Series offers distinctive touches and superb craftsmanship, satisfying either the traditional or modern design palette with a look to fit any lifestyle. The classic cabinets in our Value Series are perfect for any space offering functionality and style at a budget-friendly price.



### Premier Series



### Value Series



## Preform Countertop

Because a typical kitchen countertop must withstand a range of abuses from vegetable chopping to plant potting yet remain smooth and sanitary with the wipe of a sponge, different work centers may call for unique surfaces. Consider the alternatives, then tailor each countertop to its specific purposes.

There are several ways to purchase countertops, depending on the material and your budget. Some laminates are available prefabricated in standard sizes; however most countertops are built to specifications. Your countertop will be made at our countertop manufacturing facility by experienced professionals. Pick the style right for you!

(Subject to manufacturer's updates)



Spring Carnival 1876-52      4762-60 Mystique Dawn      4952-22 Typhoon Ice Antique



7732-58 Butter Rum Granite      Andorra Shadow 4998-22      4904-38 Desert Springs



Calcutta Marble 4925-07      3687-58 Autumn Indian Slate      7022-58 Natural Canvas

Home Finishes & Decor Options



80 Series Windows

The Alpine 80 Series is the ultimate in vinyl window technology. Our heavy-duty vinyl frames combined with 1" insulated, Low-E Glass, make these windows some of the most energy efficient produced. Only Alpine can merge incredible performance, extreme efficiency and superior durability into a premiere vinyl window collection that's as strong as it is beautiful. Alpine 80 Series Vinyl Windows are constructed with strong, heavy-duty frames and sashes to provide windows you'll enjoy for the life of your home.

Coastal or Creekside Carpet

- 25oz Textured Cut Pile
- 100% BCF PET Polyester
- 10 Year Quality Warranty



Everlife™  
LUXURY VINYL TILE  
FROM MSI

**Andover Collection - Luxury Vinyl Plank Flooring**

MSI's Everlife® Waterproof Flooring stands up to the busiest of homes and commercial spaces, with the ultimate worry-proof flooring. Create affordable, easy-care floors with a range of today's most on-trend designs, backed by industry leading warranties and 100% waterproof performance.

Abingdale

Bayhill Blonde

Blythe

Dakworth

Hatfield

Highcliffe Greige

Kingsdown Gray

Whitby White

Make your selections and Fax to 1-907-261-9206 or Email: [general.ruralsales@sbsalaska.com](mailto:general.ruralsales@sbsalaska.com)

Name of Buyer

Home Plan# Selection

Address

Phone

Fax

Email

From your road, looking at the house, which side is the front door? \_\_\_\_\_

ASC Metal Roofing & Siding - Color Selection

- Zincalume Plus

• Classic Brown

• Old Zinc Gray

• Everglade

• Winter White

• Matte Black

• Weathered Copper

• Denali Green

• Natural Rust

• Light Stone

• Canyon Red

• Slate Gray

• Forest Green

• Driftwood

• Desert Beige

• Rustic Red

• Tahoe Blue

• Copper Penny

• Red Cedar

• Chestnut Brown

• Old Town Gray

• Blackberry

Premium Prints: \_\_\_\_\_

Roofing Color: \_\_\_\_\_

Siding Color: \_\_\_\_\_

Alpine Windows:

- ☐ Vinyl Casement (Standard)

☐ Triple Pane

Exterior Doors:

- ☐ Fiberglass 6-Panel (Standard)

☐ Sunburst Lite (Full Glass)

☐ Sunburst Half-Lite (Half Glass)

KCD Cabinets - Color Selection

- ☐ Sand

☐ Design White Slab

☐ Design White 5pc

☐ Espresso

☐ Country Linen

☐ Canvas

☐ Modern Gray

☐ Slate

☐ Midnight

☐ Bright White

☐ Napa White

☐ Taylor White

Preform Countertops - Color Selection

- Spring Carnival

• Andorra Shadow

• Mystique Dawn

• Desert Springs

• Typhoon Ice

• Calcutta Marble

• Butterum Granite

• Natural Canvas

• Autumn Indian Slate

Bathroom Color: \_\_\_\_\_

Kitchen Color: \_\_\_\_\_

Everlife Luxury Vinyl Plank Flooring - Color Selection

- ☐ Abingdale

☐ Hatfield

☐ Bayhill Blonde

☐ Highcliffe Greige

☐ Blythe

☐ Kingsdown Gray

☐ Dakworth

☐ Whitby White

Shaw Coastal/Creekside Carpet - Color Selection

- ☐ Pebble

☐ Saddle

☐ Snare

☐ Charm

Signature

Date

Product availability is subject to change.

## spenard builders supply

Thank you for your interest in "Alaska at Home". Our home packages have been designed with Alaskans in mind. Affordable, comfortable housing that will stand-up to tough weather conditions. We've made a point of selecting building materials that have a proven record in rural communities with materials like metal roofing and siding, R-34, R-38 and R-47 insulation and energy rated vinyl windows.

Our program offers a selection of tiny homes, two, three and four bedroom plans. Complete blueprints and itemized materials list are included with each package. We can customize any plan to your specific needs.

The strength of our program is service. No one has more experience than Spenard Builders Supply when it comes to rural Alaska. We understand the challenges of a short building season. We've developed freight options that provide more flexibility to your building plans. Your home package will be backed by a team of professionals that know Alaska. From Utqiagvik to Sitka, SBS has been making dreams come true for over 70 years.

We look forward to working with you.



FOR MORE INFO VISIT  
**SBSALASKA.COM &**

**ASK SBS**



**Rural Sales Department**  
4412 Lois Drive  
Anchorage, Alaska 99517

Store Hours: Monday - Friday 8 a.m. - 6 p.m. & Saturday 8:30 a.m. - 5 p.m.



**spenard  
builders  
supply **

Phone: 1-800-844-9313  
Fax: 1-907-261-9206  
Email: [general.ruralsales@sbsalaska.com](mailto:general.ruralsales@sbsalaska.com)