



Spenard Builders Supply



COMMERCIAL
DIVISION

Spenard Builders Supply



www.sbsalaska.com

AREAS OF SBS
TECHNICAL EXPERTISE:

- Team of logistic champions
- World Class Supply Chain
- Energy efficient building envelope systems
- Gypsum and metal studs
- Concrete forming and tilt-up hardware and chemicals
- Insulation, from rigid to batt types
- Full range of civil construction products
- Commercial millwork and hardware
- SWPPP compliance system and product offerings
- Appliances, cabinets, countertops, trim packages, millwork and custom manufacturing
- Truss and panel manufacturing (SIPS)

SBS History	3
Testimonials	4
Our Safety Mission	5
Freight, Consolidation & Logistics	6
Panel & Truss Plant	7
Commercial Division Projects	8-9
Millwork	10
Polar Supply	11
Curtis & Campbell	12
Wallcoverings North	13
Community & Global Responsibility	14
Testimonials	15

MISSION & VALUES

To be the best in the industry, Builders FirstSource and its companies will strive to be every builder’s first source for building materials and services while delivering superior value to our stakeholders. We will:

- Build and sustain strong relationships with our customers, suppliers and employees while staying true to our core values.
- Perform at extraordinary levels locally while leveraging our national scale.

Our Core Values



INTRODUCTION

When contractors face a difficult logistical challenge and completing a large scale project, they turn to only one name, Spenard Builders Supply. With a long history of accurate and timely delivery to some of the largest, most difficult, and most aggressive construction projects, SBS has earned its reputation as the most professional, trusted, partner in the business. Our core competence in logistics and operations puts us in a different class as a building material dealer. We have assembled a network of design teams, manufacturing, distribution, consolidation and shipping facilities to maximize the expertise and service our professionals deliver every day to construction partners. With a reach that extends from the continental United States to all of Alaska, we remove a significant difficulty from the list of challenges that confront you as a commercial contractor.

SBS has been operating in Alaska since 1952 and currently has locations statewide and 5 major material consolidation and distribution centers.

For over 60 years, Spenard Builders Supply (SBS) has been a leader in the building materials industry. With a long history of accurate and timely delivery to some of the largest and most difficult construction projects in Alaska, SBS has earned its reputation as the most professional, trusted partner in business. In an effort to further serve our customers, SBS Commercial Division, was established.

With our knowledge of the supply and construction industry, we are capable of handling your framing needs. SBS Commercial Division brings together our Wall Panel Plant, Truss Plant, Interior Finishes, Civil Construction products, and Logistics teams to provide a complete project package.

Our past projects are as varied as the Alaskans we serve and consist of projects as small as single family residential to the largest commercial projects done in Alaska to date.

As a partner, we are able to offer assistance from design to completion. For your next project, team up with SBS Commercial Division.

Back in 1952, Anchorage was a very different place than it is today. The population had just passed 30,000 and the intersection of Tudor Road (or 44th Avenue as it was called then) and Minnesota Road was a dirt crossroads in the semi-wilderness of Spenard. The Alaska Railroad tracks ran nearby, the lifeline for most freight coming into Southcentral Alaska at that time.

George A Lagerquist and A.J. Johnson selected this site for the first Spenard Builders Supply, which opened with three employees and sold primarily lumber and plywood. In the 50’s and early 60’s Anchorage was experiencing one of its “boom” periods in both the public and private sectors. In particular, the military was expanding its presence in Southcentral, which had begun in earnest during the second World War, and the population was growing rapidly. In fact, the population would more than triple, to over 90,000 people by 1962!

In 1964, the Good Friday Earthquake, one of the largest recorded quakes in history, did extensive damage to SBS facilities and much of the rest of Southcentral Alaska. The store opened for business the next day, and helped Alaskans rebuild their homes and lives. Only three years later, disaster struck again as fire destroyed the entire SBS facility, including warehouses, offices and inventory. Once again SBS managed to open for business the next day in two small salvaged cabins.

The 70’s saw not only the expansion of the Alaskan economy, but of Spenard Builders Supply as well. The building of the Trans-Alaska Pipeline in the mid-70’s brought a flurry of activity and another population boom as Anchorage and the rest of the state grew by more than 40% during the decade. Pipeline contractors, businesses involved with producing oil on the North Slope and those providing material and services all across the state all fueled the economy.

Late in the 70’s and early 80’s Spenard Builders Supply grew with the rest of Alaska’s economy. Lagerquist’s two other Alaska yards, one in Anchorage and one in Fairbanks, became branches of SBS, and several Superior

Building Supply yards were acquired from Palmer G. Lewis Co. New SBS yards were built in Eagle River and Sitka as the economy topped out again in the mid-80’s, and was followed by a recession of unprecedented proportions. The middle years of the 80’s were tough for Alaska, as oil prices fell, construction ground to a halt, banks failed and thousands of homes were left empty as their owners left the state. The population of Anchorage dropped from a high of 248,000 in 1985 to a low point of 219,000 in 1988 before beginning to recover.

The 90’s saw slow and steady growth as the Alaskan economy diversified. Retail, tourism, mining and fishing have all played a part in this stabilization. SBS expanded in the 90’s to Barrow, on the Arctic Ocean and Seward, on the Kenai Peninsula, and we now have 13 facilities and distribution centers in Anchorage and Tacoma, Washington.

Spenard Builders Supply continues to play a role in building Alaska, from remote cabins to big-city high rises, schools to apartment buildings and everything in between. We can design your kitchen, deck or truss roof, build custom windows or countertops, and deliver to your job site, no matter where, and all with the best brand name products in the business. Our strength is our relationships with our customers, and our willingness to “go the extra mile” to get your job done.

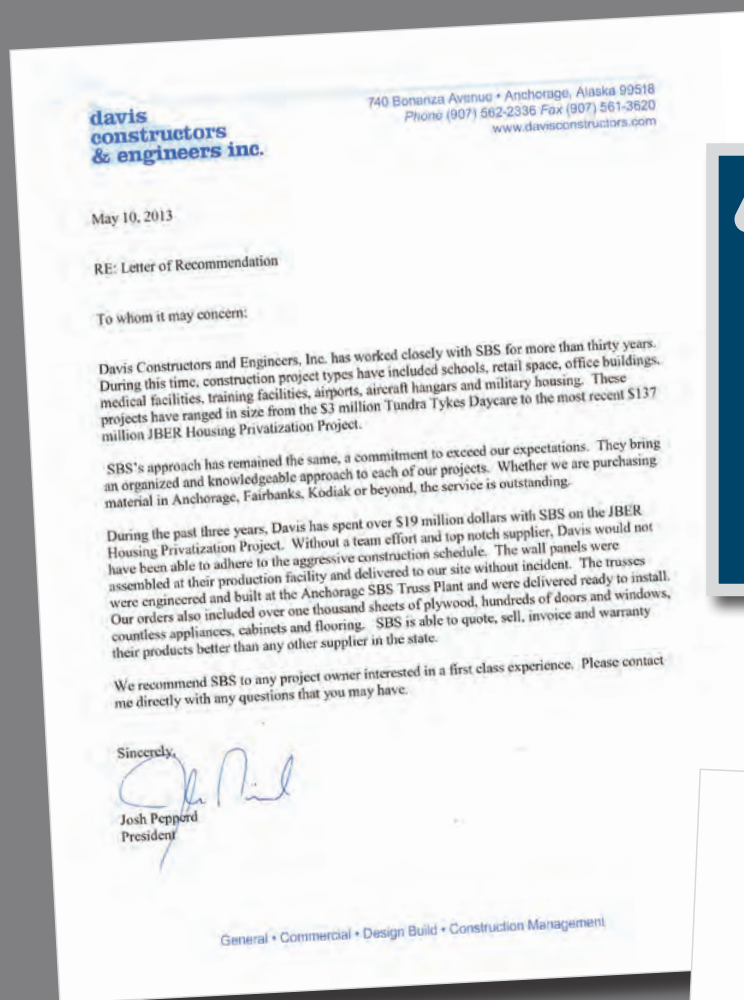
In 1978, Lanoga Corporation purchased SBS and several other building supply stores in Anchorage and Fairbanks. SBS prospered in the ensuing 28 years with statewide growth and the development of manufacturing services.

Today the Spenard Builders Supply brand operates under Builders FirstSource, Inc. one of the nation’s largest professional building materials suppliers. With over 430 locations, across 40 states BFS provides a nationwide network to better serve its four critical customer segments, including production builders, custom builders, multi-family/commercial, and repair and remodel.



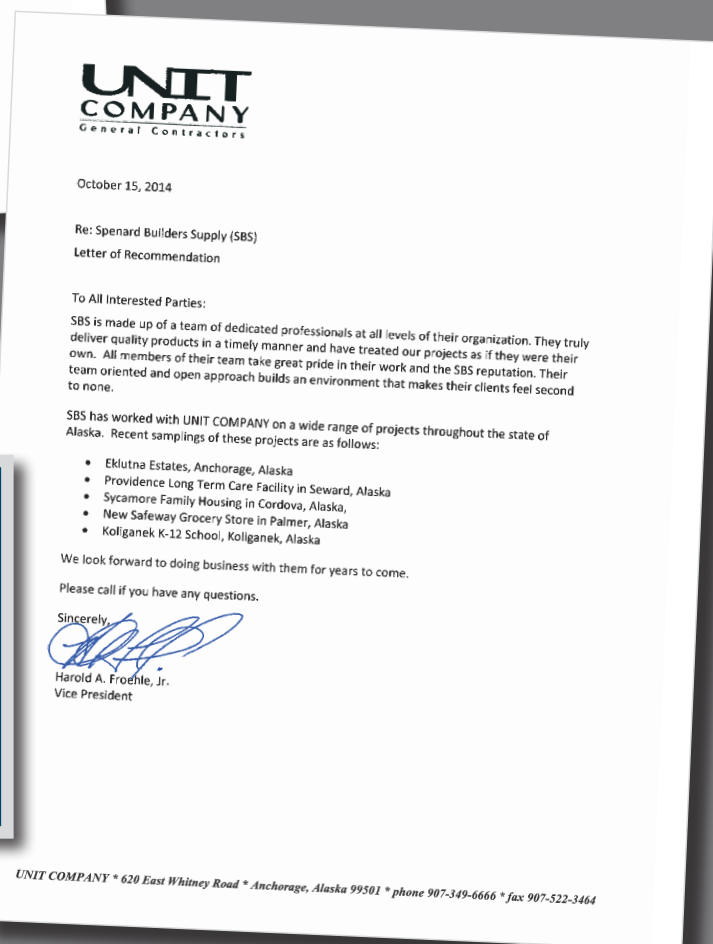
TESTIMONIALS

OUR SAFETY MISSION



“SBS is able to quote, sell, invoice and warranty their products better than any other supplier in the state.”

—Josh Pepperd, President, Davis Constructors & Engineers, Inc.



“SBS is made up of a team of professionals at all levels of their organization.”

—Harold A. Froehle, Jr., Vice President, UNIT Company

Our employees are important to us, so we work hard to ensure a safe environment.

Each of our divisions and locations commits to our policies of

1. Eliminating known hazards
2. Maintaining a “Drug Free Workplace”
3. Developing safety rules that safeguard our employees’ well being

We recognize that 90% of workplace injuries are due to “human error,” that is, unsafe acts such as rushing through a task or not paying attention to the job at hand. We train our employees in safe work habits, reinforcing the belief that NO JOB IS SO URGENT THAT WE CAN’T DO IT SAFELY. In return, employees must abide by all safety rules, remain drug free, notify their supervisor of any unsafe conditions, and stay focused on what they are doing and what is going on around them at all times. We want to insure every employee goes home at night the same as when they came in.

We see our customers as our neighbors. We’re proud to be active participants in making our communities strong and vibrant. We also believe that, as a leader in supplying building materials, we have to be responsible stewards of the planet. We use environmentally friendly products whenever possible, meet or exceed environmental regulations, and always respond to our customer’s environmental wishes. Each day, we’re proving that business can have a conscience.

A Better Workplace

Safety is our top priority. We work to prevent accidents and maintain a consistent culture of safety throughout the company. Furthermore, we believe businesses are built on honesty, trust and fairness, with respect for all. It’s the only way to truly celebrate the empowering potential of teamwork – by keeping the finest people in the industry safe, respected, and empowered to succeed.

Excellence in Safety

Spenard Builders Supply is Alaska’s largest building material supplier. We have retail stores with emphasis on contractor sales. In addition to the stores/yards, SBS also operates production facilities (millwork, truss & wall panel) and distribution centers. Anchorage is the home of our largest facility, Lois Drive, with over 200 employees at that location alone. Over the years SBS has embraced safety by making a substantial effort and committing financial resources to help improve our program and to promoting a safety in the workplace.

Safety in our Company

- Management Commitment & Support
- Safety Committees
- Incentive Program
- Incident Review
- Worker Compensation Claim Management
- Information Sharing Between Yards
- Safety Meetings
- Orientation & Training

Spenard Builders Supply, Inc. truly believes that we are successful because of the quality people who work here. It is our role to offer them a safe and healthful place to work and we do this by providing formal safety programs, but also by focusing on the individuals. Our philosophy is to encourage our crews to change their safety awareness in everything they do both at work and at home.

To do this, it takes recognizing what motivates our people. With such a diverse group of sales, office, yard, drivers & production personnel we entrust the department managers (who know the employees the best) the latitude to present and reward safety excellence in their own way while providing ‘corporate’ guidance and support. Some have given prizes for those with good safety performance while others have done things like served employees lunch.

It has been our experience and has become our belief that the key to being a successful business, is to invest in and show appreciation to those who get the job done every day.



FREIGHT, CONSOLIDATION & LOGISTICS

Largest beneficial owner of freight shipping to Alaska

1. Shipped an average of 357,000,000 lbs. of freight per year for the last 10 years
2. Contracts in place with all ocean common carriers
3. SBS operates our own contract barge system
4. Distribution facilities in both Lakewood, Washington and Anchorage, Alaska
5. Partnerships with both LTL carriers and truck lines for efficient and cost effective transport into the Pacific Northwest and beyond Anchorage

Contract Barge –SeaTac Marine Services

1. 12 ½ acre marine terminal located on Duwamish waterway in Seattle
2. 1600' waterfront dock space
3. Steel deck barges with a carrying capacity up to 9500 tons
4. 35 ton forklifts
5. Experts at loading and securing project materials

Lakewood Central Warehouse/SBS

1. Consolidation/Distribution warehouse for Spenard Builders Supply
2. Located in Lakewood, Washington for easy access to ocean carriers in Tacoma and Seattle
3. 60,000 sq ft of warehouse space
4. 2 ½ acres of yard space
5. Experts in receiving and breakout of project cargo

Specializing in:

Project pricing to include trucking, barge, steamship, rail, air and any other necessary conveyance to get the job done.

- Export crating to spec
- Packaging for ocean transport
- Haz-Mat documentation and placarding
- Detailed manifests can be job specific design

Job Consolidation Specifics

Performing job consolidations to Alaska for over 25 years

Recent Customers:

- UIC
- Sundance Construction
- Collins Construction
- Unit Company
- Davis Constructors & Engineering
- TBI Construction
- AVCP
- McGraw Custom Construction
- SKW
- Osborne Construction
- Various Villages in Western and Interior Alaska

Manifesting of Job / Project Cargo

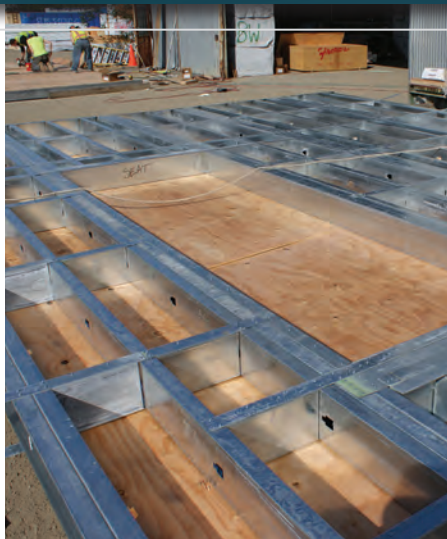
All loads in vans, on flats or LTL is manifested. Van freight is manifested as follows:

1. PO#
2. Vendor
3. Description of goods
4. Quantity
5. Weight
6. Goods are listed on the manifest as loaded nose to rear of equipment
7. Digitize loads
8. Manifest is sent directly to the Salesman coordination the job. Manifest copy is also placed in the rear of each container and the General Contractor is copied

Flat Loads

1. Itemized list of each unit on the flat with weight
2. LTL direct to carrier's dock will have an itemized Bill of Lading with attendant weights

PANELIZATION PLANT



Wood & Steel Wall Panels / Steel Trusses

Our 15,000 square foot production facility in Birchwood has state-of-the-art equipment capable of producing interior and exterior wall panels to meet a wide variety of specifications. Using the latest Mitek Saffire software, our on-site designers can transform your existing plans into the highly detailed engineered drawings used by our skilled assembly specialists to construct your panels. This pre-construction detailed designing also allows unforeseen plan discrepancies to surface far in advance of actual construction, possibly alleviating project down time or costly field repairs.

Contractors are realizing the benefits of this construction process:

- Reduction of on-site labor needs and costs
- Controlled production environment for optimum quality and precision
- No down time or time loss due to weather constraints
- Reduce material waste
- Less chance of job site theft
- Faster project completion

Our facility can manufacture wall panels for a variety of building projects, from single-family homes to multi-unit hotels.

Currently the SBS Panel Plant is working in conjunction with the SBCA (Structural Building Components Association) for certification in the industry's SCORE Elite program. SBS is currently certified in the following SCORE categories:

- Operation Safety - Plant Certified
- Operation Safety - Safety Coordinator Certified
- QC Wall Panel Certified
- Forklift Operation and Safety Certified

Member of the Better Business Bureau, ABC member, AGC member through Spenard Builders Supply

FEATURED PROJECTS

Bush Housing (15 Houses) Anchorage, AK

Remote village housing framed with 2x8 walls and sheathed with 7/16" OSB Zip Panel barrier and insulate with 5-1/2" Rigid foam. Exterior and interior walls framed and packaged in containers and flat decks for barge shipment.

Contractor: TBI Construction

Steel Truss Anchorage, AK

Aegis steel designed replacement roof trusses for a remote village building. 41' long and 8' tall using 12ga, 16ga and 20ga material and multiple screw attachment. Bundled for barge shipment.

Contractor: YKHC

Deadhorse WWTP Anchorage, AK

Assembly of Exterior walls with 8" 16ga steel studs including sheathing both exterior and interior sides and installing 6" of urethane foam into wall cavity. There was 50 panels that were 20' wide and 28' tall shipped from Birchwood direct to Deadhorse.

Contractor: Osborne

FTR Barracks 480 man Anchorage, AK

Exterior framed building skin only using 6" 12ga steel studs and framing, including blast mitigation window framing for Army Corp. specifications. Consisted of 280ea 10'6"x28' Panels.

Contractor: Kiewit Building Group





COMMERCIAL DIVISION PROJECTS

COMMERCIAL DIVISION PROJECTS



Commercial Projects:

PROJECT	CONTRACTOR	LOCATION
Crow Medical Building	Hickel Construction and Engineering	Anchorage, AK
Fort Richardson Office Building and Warehouse	Davis Constructors	Ft. Richardson, AK
Sockeye Inn	H. Watt Scott Construction	Anchorage, AK
Kodiak Missile Launch Facility	Lockheed Martin	Kodiak Island
Whittier Tunnel	Kiewit Building Group	Whittier
AKDOT Interchange Design Build	Kiewit Building Group	Parks/Glenn Hwy Interchange
Port Expansion	AIC / QAP	Port of Anchorage
Ted Stevens AIA	Granite Construction	Anchorage
Kuparuk Airport	Conoco Phillips	North Slope
Offshore Development	Shell	Prudhoe Bay
Point Thompson	Exxon	North Slope
Directional drilling	Haliburton	North Slope
Alpine oilfield	Haliburton	North Slope
Maint. Building, Prudhoe Bay	Haliburton	Prudhoe Bay
Alyeska Pipeline pump station	Fluor	North Slope
Alaska Airlines hangar	Mortenson	Anchorage
Matanuska Valley Hospital	Bovis	Matanuska Valley
Ted Stevens AIA concourse	PCL	Anchorage
Kuparuk Airport	CH2M Hill	North Slope
Anchorage Fish Hatchery	Kiewit	Anchorage
UAA Science Building	Cornerstone	Anchorage
Federal Express Hard Stands	QAP	Anchorage
Goose Creek Correctional Center	Neeser	Goose Creek
Anchorage Marriott Hotel	Kiewit Building Group	Anchorage
Anchorage Museum	Alcan General	Anchorage
Dena'ina Civic and Convention Center	Neeser Construction	Anchorage
Savoonga School	UIC Construction	Savoonga
Hampton Inn	G2 Construction	Fairbanks
Best Western Hotel	G2 Construction	Fairbanks
Alpine Lodge	G2 Construction	Fairbanks
Alaska Sealife Center	Strand Hunt	Seward

Department of Defense Projects:

FTW340 barracks - 94 units	Watterson Construction	Fort Wainwright
FTR196 barracks - 132 units	Watterson Construction	Fort Richardson
ELM276 Dorm - 120 units	Watterson Construction	Elmendorf AFB
FTR243 barracks - 180 units	Watterson Construction	Fort Richardson
Clear dormitory - 72 units	Alcan General	Clear Air Station
FTW284 barracks - 72 units	Watterson Construction	Fort Wainwright

PROJECT	CONTRACTOR	LOCATION
---------	------------	----------



FTW336B	Kiewit Building Group	Fort Wainwright
Battalion HQ	Bristol Environmental	Fort Wainwright
USCG Housing	Unit Company	Cordova
Missile Defense	Bechtel	Fort Greely
ANG Facilities Building	DCK Pacific	Kulis Air National Guard
EAFB Flight Line	Granite	Elmendorf Air Force Base
EAFB hangars F-18 / F-22	Kiewit	Elmendorf Air Force Base
EAFB VA Hospital	Mortenson	Elmendorf Air Force Base

Multi-Resident Housing:

Admirals Cove (previously Port Commons)	Ironwood Construction	Anchorage, AK
Aurora Park	Discovery	Anchorage, AK
Chandler's Cove Buildings 2&3	Christensen Builders	Anchorage, AK
Loussac Place	The Petersen Group	Anchorage, AK
Providence Alaska Cottages	Davis Constructors & Osborne Construction	Anchorage, AK
Sheerline 5-Plexes	Sheerline	Anchorage, AK
Spinell 4-Plexes	Spinell Homes Inc	Eagle River, AK
Eklutna Estates	Cornerstone	Anchorage, AK
Independence Park Manor I and II	Handle Construction	Anchorage, AK
Lumen Park Senior Housing	Lumen Design	Anchorage, AK
Seward Mountain Haven	Unit Company	Seward, AK

Rural Alaska:

Barrow Hospital	UIC Construction/SKW JV	Barrow
Noatak School	UIC Construction	Noatak
Hotel North Pole	Alaska Commercial Construction	North Pole
St Michael School	SKW Eskimos	St Michael
Kilbuck School	SKW Eskimos	Kilbuck
Galena Assisted Living	Interior Regional Housing	Galena

Military Housing:

Cordova Coast Guard Housing	Unit Company	Cordova, AK
JBER Housing Privatization	Davis Constructors & Osborne Construction	Anchorage, AK
FTR Barracks 480 man	Kiewit Building Group	Ft Richardson, AK
ConAm 88 man	Alutiiq Native Corp	Prudhoe Bay, AK
Privatization Phase 1 - 828 units	Aurora Military Housing	Elmendorf AFB
Privatization Phase 2 - 1194 units	Aurora Military Housing	Elmendorf AFB
Denali Village - 200 units	Osborne Construction	Fort Wainwright
Siku Basin - 126 units	Osborne Construction	Fort Wainwright
Bear Paw Housing - 75 units	Nenana Lumber Company	Fort Wainwright
Taku Gardens - 126 units	Watterson Construction	Fort Wainwright
Eielson Housing - 80 units	Atherton Construction	Eielson AFB



MILLWORK

POLAR SUPPLY



Most everyone knows that SBS Millwork stocks high quality residential products and offers in-house millwork services and custom machining, but we may be one of Anchorage's best kept secrets for commercial projects. SBS commercial millwork strives to supply you with the products you need, on time and at a competitive price. From the start to the finish of your project we are here to help with an in-house fully staffed commercial door and hardware department.

SBS Millwork stocks a wide variety of commercial products and services committed to the best customer service and quality. We can generate proprietary professional door and hardware schedules to help get your job started, or for fully detailed projects provide professional quotes, submittals and shipping logistics services for state wide delivery.

With the knowledge that doors and hardware that look good make an impact on any project, SBS represents the top manufacturers in the industry including, Curries hollow metal doors and frames, Timely Frames, Stanley/Best locks and hardware, Pemko sills and gaskets, Rockwood Hardware, Corrim FRP doors and frames, Lynden and Graham architectural doors, Schlage Locks, Von-Duprin Exits, McKinney Hinge and many more.



Spenard Builders Supply
A Division of Spenard Builders Supply



POLAR SUPPLY COMPANY

A Division of Spenard Builders Supply

Polar Supply Company is Alaska's leading supplier for Civil, Structural and Industrial Coating products.

We work closely with the Oil, Gas and Mining Industries as well as heavy construction (highway, infrastructure, airports, marine terminals) by putting customer service first. We provide the right solutions in a timely manner and the use of our products will enhance productivity, reduce costs and help keep workers safe.

Industrial coatings

- Marine and protective coatings
- EIFS
- Abrasives
- Pipeline Joint Treatment

Structural

- Insulated Concrete Forms
- Concrete Forming Hardware
- Bonding Agents
- Sub-grade water proofing
- Bridge deck membrane
- High performance structural and non shrink grouts
- Vapor Barrier
- Fire Stop

Civil

- Geotextile
- Geomembrane Liners
- Dust Control
- Geogrid
- Erosion Control
- Ice road delineators
- Sub-grade insulation
- Erosion and sediment control
- Culvert and drainage solutions

Commercial Projects:

PROJECT	CONTRACTOR	LOCATION
Crow Medical Building	Hickel Construction and Engineering	Anchorage, AK
Fort Richardson Office Building and Warehouse	Davis Constructors	Ft. Richardson, AK
Sockeye Inn	H. Watt Scott Construction	Anchorage, AK
Kodiak Missile Launch Facility	Lockheed Martin	Kodiak Island
Whittier Tunnel	Kiewit Building Group	Whittier
AKDOT Interchange Design Build	Kiewit Building Group	Parks/Glenn Hwy Interchange
Port Expansion	AIC / QAP	Port of Anchorage
Ted Stevens AIA	Granite Construction	Anchorage
Kuparuk Airport	Conoco Phillips	North Slope
Offshore Development	Shell	Prudhoe Bay
Point Thompson	Exxon	North Slope
Directional drilling	Haliburton	North Slope
Alpine oilfield	Haliburton	North Slope
Maint. Building, Prudhoe Bay	Haliburton	Prudhoe Bay

FEATURED PROJECTS

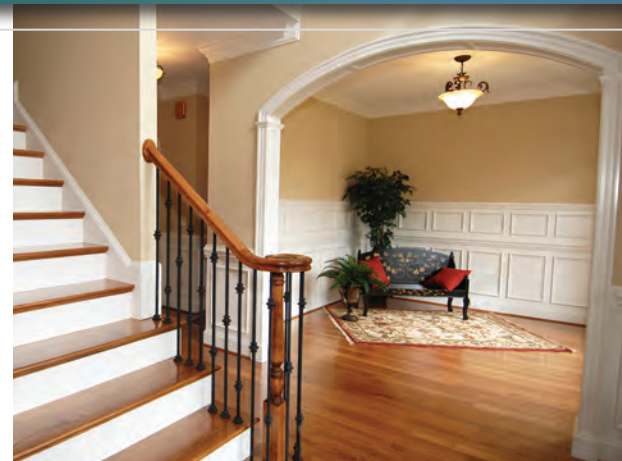
Northern Lights Firestation
SR Bales Construction

Eagle River Dental
G2 Construction

Eagle River Senior Housing
Neaser Construction

Strip Mall
F&W Construction





CURTIS & CAMPBELL, INC.

a division of Spenard Builders Supply

Since 1966, Curtis & Campbell has provided paint, residential & commercial flooring, windows and wall treatments throughout Alaska. We provide materials for new home construction, remodeling and the DIY markets. With our in house design team, we work with builders and general contractors providing them with the latest interior finish products.

Featured Projects:

PROJECT	CONTRACTOR	LOCATION
Park Place Condo – 48 units	Dokoozian Construction	Anchorage
Trailside I,II,III - 124 units units	Neeser Construction	Anchorage
Several completed Man Camps	Alutiiq Construction	North Slope
Marriott Courtyard – 155 rooms	Anchorage Protective Coatings	Anchorage
Alaska Regional Hospital	Excel Construction, F & W Construction	Anchorage
GSA Border Housing	Tanik Construction	Haines & Alcan
Aurora Square Condominiums – 48 units	Lumen Design	Anchorage
Senior Low Income Housing – 20 units	Lumen Design	Anchorage
Tanalien School	SKW Eskimos	Port Alsworth
Alyeska Resort	Alyeska Resort	Girdwood
Marriott Springhill – 159 rooms	Anchorage Protective Coatings	Anchorage
Tununak School	UIC Construction	Tununak
Providence Hospital	Mutiple General Contractors	Anchorage
State of Alaska Avtec Dorms	Cornerstone Construction	Seward
JBER Military Housing	Osborne Construction	Elmendorf-Richardson
Custom Homes	Multiple Builders	Statewide

- Hardwoods—Solid & Engineered
- Laminate Flooring
- Carpet (including the NEW Smartstrand©)
- Linoleum / Marmoleum
- Vinyl Flooring
- Glass & Metal Tiles
- Ceramic & Porcelain Tile
- Granite, Marble & Slate
- Countertops: Quartz, LG, Avonite, Corian
- Cork and Bamboo Floors
- Window Treatments
- Residential & Commercial Flooring
- Residential & Commercial Wallcoverings
- Design Services—5 Designers on staff
- Architectural Paint – PPG, Benjamin Moore

WV wallcoverings north, inc.

a division of Spenard Builders Supply

Wallcoverings North is Alaska's leading supplier for hospitality and Design-Build projects. Supplying interior finishes for North Slope man-camps to luxury hotels, commercial buildings, schools and multi-housing projects. We do Design-Build best.



Hospitality

- Furniture
- Appliances
- Cabinets/Countertops
- Artwork
- Draperies
- Bedspreads
- Hospitality Mattresses
- Pillows
- Linens and Towels
- Desk Chairs
- Banquet Chairs and Tables
- Carpet
- Tile, Laminate, Hardwood Flooring

Wallcovering

- Vinyl Commercial Grade
- Teflon Treated Commercial Grade
- Fabric Commercial Grade
- Grasscloths
- Silks
- Linens
- Acoustical Wall Carpet
- Wallcoverings Adhesive
- Altro Whiterock
- Wet Wall Systems

Wall Protection

- Protective Wallcovering
- Handrails
- Crash Rails/Bumper Guards
- Corner Guards
- Stainless Steel Corner Guards
- Chair Rails

Acoustical Wall Panels

- Fabric Wrapped
- Perforated Vinyl Wrapped
- Custom Sizes Available
- FabricMate Systems

Designer & Contract Fabrics

- Robert Allen
- Fabricut
- Kravet

Dry Erase Wallcovering

- Decorative Dry Erase
- Magnetic Dry Erase

Cork

- Natural & Colored Cork

Tack Board/Dry Erase Board

- Wall Panels
- Tack Boards
- Dry Erase Boards
- Magnetic Dry Erase Boards

Window Treatments

- Window Blinds

Theater Chairs



COMMUNITY AND GLOBAL RESPONSIBILITY

TESTIMONIALS



Spenard Builders Supply is always finding ways to help our local community

- Habitat for Humanity
- Boys and Girls Club
- Boy Scouts
- March of Dimes
- Camp Fire USA
- CCHRC
- Associated General Contractors
- Alaska State Home Builders
- Anchorage Home Builders
- Society of Petroleum Engineers
- Society of Military Engineers
- AIA
- MatSu Home Builders
- Associated Builders & Contractors
- SE Alaska Home Builders
- Interior AK Home Builders
- Kenai Peninsula Home Builders
- AWAIC
- High School Booster clubs
- UAA & UAF
- Area Chambers of Commerce
- Iditarod
- Iron Dog
- Yukon Quest
- Alaska Aces
- Anchorage Bucs
- Glacier Pilots
- Red Cross



We're very proud of our relationship with Habitat for Humanity. Through employee volunteer efforts, as well as personal contributions, we've developed deep relationships among our employees, the Habitat chapters, and the recipient families who never fail to inspire us.

Spenard Builders Supply is always finding ways to help the environment

We are the nation's largest diversified supplier of building materials to the professional contractor, so we take our role in sustainability very seriously. We know that "being green" doesn't just mean offering green products. We believe that being a sustainable company should be reflected in what we do, how we operate and what we offer.

SBS is committed to conducting our business with an environmental awareness and to operating in a manner that protects the environment.

It is our policy to:

- Maintain an organizational commitment to education and involvement regarding environmental issues affecting our industry and our company

- Use our influence within the industry to promote the development and adoption of sound environmental practices and sustainable forestry management
- Increase the representation of "environmentally friendly" products in our offerings where such claims can be reasonably substantiated and based, wherever possible, on scientifically credible product life cycle assessment criteria
- Meet or exceed the requirements of applicable governmental laws and regulations dealing with environmental protection that pertain to our operations and expect the same from the vendors and manufacturers of the products we sell
- Be attentive and responsive to the desires of our customers in our individual markets with respect to the environmental impact of our operations and the products we sell

SBS partners with key vendors to help the environment

- Energy Star Appliances
- Energy Star windows
- Formaldehyde free particleboard
- Locally manufactured products
- FSC certified
- Vendor relationships that support the Green building process
- SWPPP environmental products, reclamation product lines and Geomembranes
- Water based and low voc options throughout our product lines

Offering Building Sciences to contractors

High Performance Building Seminar - Construction Instruction – At our College of Building Knowledge builders learn about the performance tests required by new energy codes and how to select and use the right products to build a high performance home. Lower air leakage, better insulation strategies and superior moisture control. Advanced framing techniques, smaller HVAC systems, and other innovative tips.

Annual SBS Customer Appreciation & Product Show – Free seminar, continuing education accredited classes and product show presented by LEADERS in the industry and Cold Climate Housing Research Center.



February 24, 2011

Spenard Builders Supply
4412 Lois Drive
Anchorage, AK 99517

Contract Number: W911KB-10-C-0005
Contract Name: Design/Construct Barracks (FTW336B) Aviation Task Force - Phase 1
Fort Wainwright, Alaska

Subject: Letter of Commendation

Attn: Randy Bridwell -

I would like to thank you and your team at Spenard Builders Supply (SBS) for a job well done on the Fort Wainwright 336B Barracks Project for the supply of all the rough carpentry materials and fasteners. Your team's dedication to this project right from the start was key to making the supply and erection of the superstructure such a huge success. Your company stands out compared to your competitors here in the state of Alaska with your ability to design and construct the wood wall panels and trusses while maintaining a high level of quality workmanship.

I appreciate the involvement during the design and construction stages, it was a pleasure working with Paul, Steve, Pete, Nayne, and Carl, working through the design and construction issues and learning from their vast amount of knowledge in wood framing. Any issues we had were handled in a timely, professional manner allowing us to focus on building the work. Having SBS on our TEAM enabled us to enclose a 108,000 SF building in 3 months, which was a critical milestone in our schedule and essential to make when working in the sub arctic climates of Fairbanks Alaska. I value our relationship with SBS and look forward to working with your company again on another project.

KIEWIT BUILDING GROUP

Joe Hotko
Joe Hotko,
Project Manager

KIEWIT BUILDING GROUP
2020 West International Airport Road #C-6, Anchorage, AK 99506
(907) 222-6300 (907) 222-6300 fax



We value our history and relationship with SBS and we look forward to another 44 years of teamwork...

—John MacKinnon,
Executive Director,
AGC of Alaska



ASSOCIATED GENERAL CONTRACTORS of ALASKA

8015 Schwan Street • Anchorage, Alaska 99518
Telephone (907) 261-5354 • Fax (907) 262-9118

3750 Benita Street • Fairbanks, Alaska 99706
Telephone (907) 452-1809 • Fax (907) 456-8500

May 1, 2013

To whom it may concern:

Spenard Builders Supply (SBS) has been a member with the Associated General Contractors of Alaska (AGC) since June 1969.

SBS management and employees have supported AGC by serving on numerous committees, providing labor and materials for community projects, supporting our education and training efforts and the efforts of improving the construction industry by sponsorships and fund raising events.

In a state with many logistical challenges, the reputation of Spenard Builders in providing outstanding service and excellent products at a competitive price is known throughout the state of Alaska. They have been an integral part of building Alaska.

We value our history and relationship with Spenard Builders Supply and we look forward to another 44 years of teamwork with this professional company and the people who work for there.

Sincerely,

John MacKinnon

John MacKinnon,
Executive Director
Associated General Contractors of Alaska